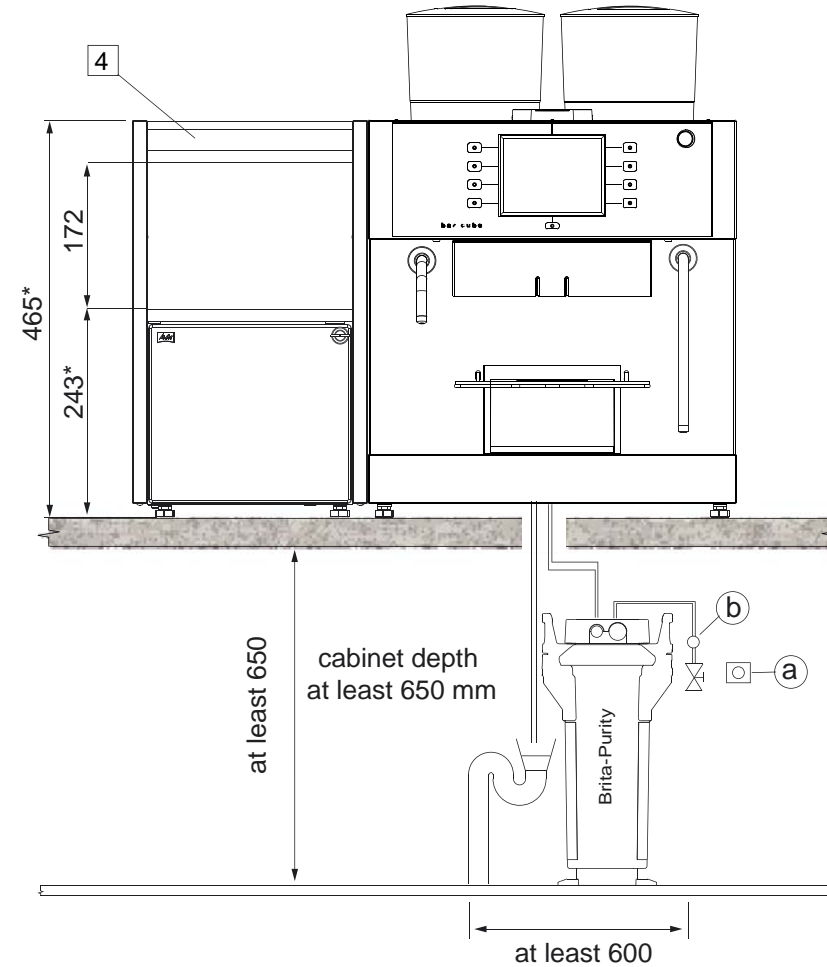
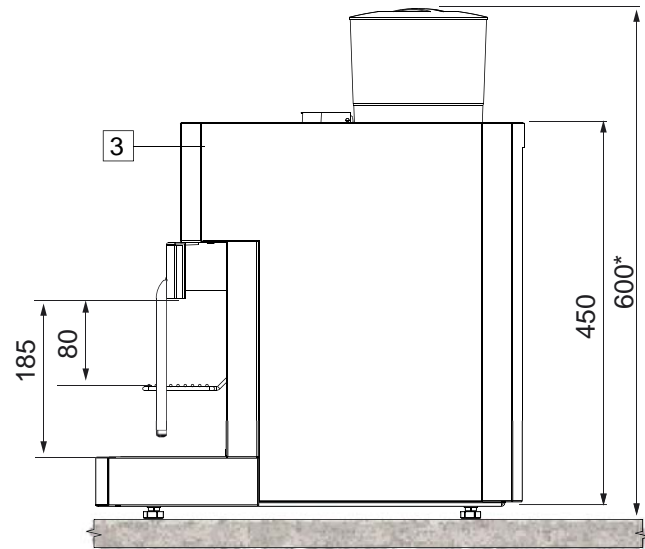
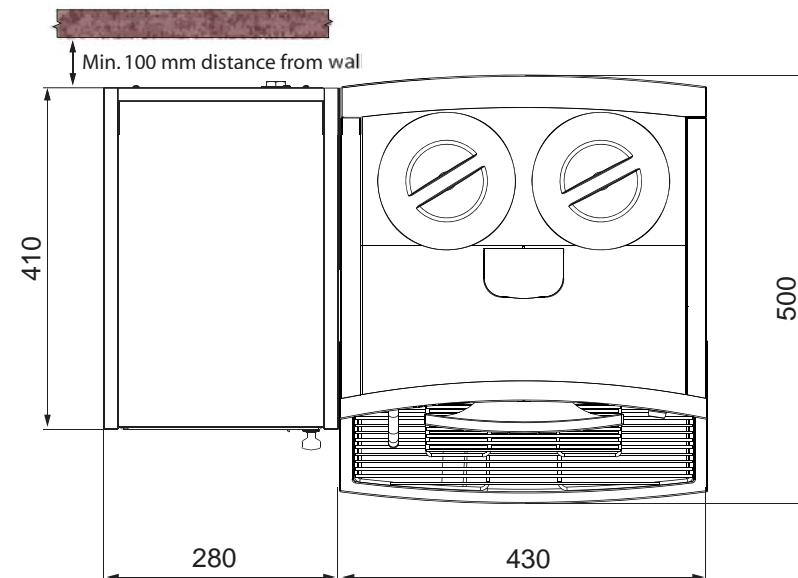
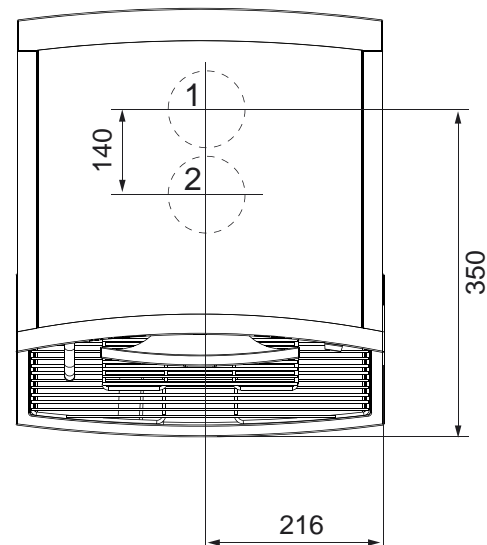


Min. 200 mm space required above the bean container



3 Melitta bar-cube 1C 2G

4 Melitta bar-cube mc-cw



- 1) Ø 120 mm for supply and drainage
- 2) Ø 120 mm for container discharge (optional)

**Attention: All measures are approx.**

Additional information available at:  
www.melitta.de/mss

The Melitta® bar-cube is delivered ready for connection. However, before setting up the necessary connections must be installed on site easily accessible within a radius of 1 m. This preliminary work must be performed by licensed professionals in strict compliance with valid regulations. The Melitta® customer service is not authorised for this work and therefore does not take any responsibility for the installation.

The machines must be placed on a level tabletop. The supply lines must be routed up from below. A hole of approx. Ø 120 mm (1) must be drilled in the tabletop as feed-through for the lines. Machines with container drop require a hole of approx. Ø 120 mm in diameter (2).

\* With the fitted feet the machines can be raised by approx. 15 mm.

**Machine data:**

**Melitta® bar-cube**

Hourly output: 20 l of hot water  
Approx. 100 cups of coffee

Permissible ambient temperature: + 5°C – 30°C  
Permissible relative humidity: < 80 %  
Noise level: < 70 dB(A)

Dimensions (W x D x H): 430 x 500 x 600 mm  
Weight approx.: 47 kg

Coffee bean capacity: 2 x 650 g  
Cap. of grounds drawer: approx. 25 – 30 portions  
Coffee spout length: approx. 50 mm  
Water spout length: approx. 74 mm  
Steam spout length: approx. 74 mm  
(spouts can be swivelled)

**Melitta® bar-cube mc-cw**

Dimensions (W x D H): 280 x 410 x 465 mm  
Weight approx. : 19.5 kg  
Milk container approx.: 4 litres  
Cup warmer capacity approx.: 42-80 cups

**Electrical connections (a):**

**Melitta® bar-cube**

Voltage supply: 230 V/50 Hz  
Power consumption: 2.8 kW max.  
Fuse on site: 16 A required  
Connection: 1.3 m mains cable with 'Schuko' plug

**Melitta® bar-cube mc-cw**

Mains connection: 230 V/50 Hz  
Rated power: 150 W

The connections are to be made via an easily accessible, pre-installed Schuko socket. These have to be fused with a fault current circuit breaker (max. 30 mA).

**Water supply connections (b):**

Tapwater connection: G 3/4" male thread

According to the regulations of the German Association for Gas and Water (DVGW) a stop cock with check valve must be installed in an easily accessible place. A special connection hose is supplied. For safety reasons, this hose should not be shorted.

Tapwater pressure: min. 0.25 MPa (2.5 bar) at approx. 2 l/min.;  
If it is more than 0.6 MPa (6 bar) static, a pressure regulator is required.

Carbonate hardness of tapwater: 1° dKH - 3° dKH no action is required  
If it is more than 4° dKH, a decarbonisation system is required (Brita filter)  
If it is less than 1° dKH, please contact Melitta SystemService for further assistance!

Waste water connection: at least DN 25 – NW 1"

The Melitta® bar-cube is fitted with a connection piece for drainage of the drip tray and is to be connected to an on-site drain with the supplied pipe. The required water trap can be provided by Melitta customer service.

- Available accessories (optional):
- Compressor fridge for Melitta® bar-cube;
  - Container discharge on request;
  - Cup warmer;
  - Electronic coin/card mechanism

			Date:	09/2008
			Drawing no.:	
02	Slk/Sei	09.11.2010	Page:	1 of 1
01	Gnt/Sei	22.09.2009	Subject to change	
Ind.	Change	Date	Property of Melitta SystemService.	Duplication not allowed.



Melitta® bar-cube  
Dimension and data sheet